



**Donaldson**  
FILTRATION SOLUTIONS  
AEROSPACE & DEFENSE

# NAVAL FILTRATION SOLUTIONS DUPLEX FILTER MANIFOLD MIL-DTL-24402/2





## HYDRAULIC FILTRATION

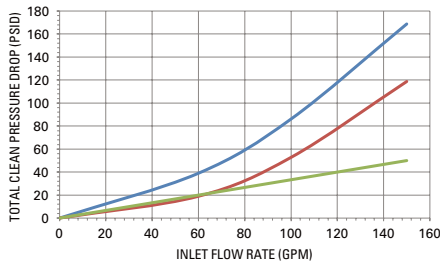
Rated Flow	100 gpm
Operating Pressure	3000 psig
Proof Pressure	4500 psig
Rated Fatigue Pressure	3000 psi
Material	Aluminum, Stainless Steel
Fluid	MIL-PRF-17331
Filter Element (2)	B-size per MIL-DTL-24402 or SAE J2321
Options	DP Indicators or DP Gauges; Bypass Valve



## PERFORMANCE AT-A-GLANCE

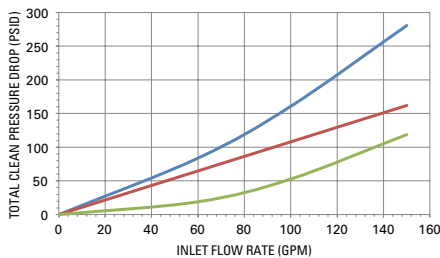
### Duplex

MIL-DTL-24402 (B-size) Element: P/N 325807  
40 micron  
Fluid MIL-PRF-17331 @100F



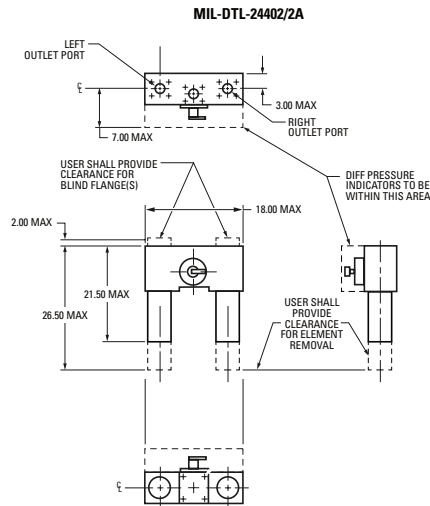
### Duplex

SAE J2321 Element: P/N 336663  
7 micron  
Fluid MIL-PRF-17331 @100F



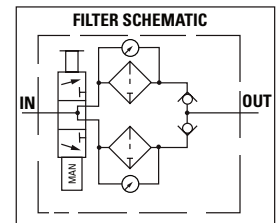
## DUPLEX SPECIFICATIONS

### Envelope



Duplex element filter housing outline dimensions

### Hydraulic Schematic



For more information, contact:

**Donaldson Company, Inc., Aerospace & Defense Group**  
1400 West 94th Street, Minneapolis MN 55431-2370

**Donaldson Defense** +1-877-314-9637  
defense.americas@donaldson.com

**Europe** +33 1 30866698  
defense.emea@donaldson.com

To learn more about the Donaldson Company, Inc., Aerospace & Defense Group visit [www.DonaldsonAerospace-Defense.com](http://www.DonaldsonAerospace-Defense.com)

**Brochure No. F112276 ENG (11/15)**

© 2015 Donaldson Company, Inc. All rights reserved.  
Donaldson Company, Inc. reserves the right to change or discontinue any model or specification at any time and without notice. Printed in the U.S.A.