

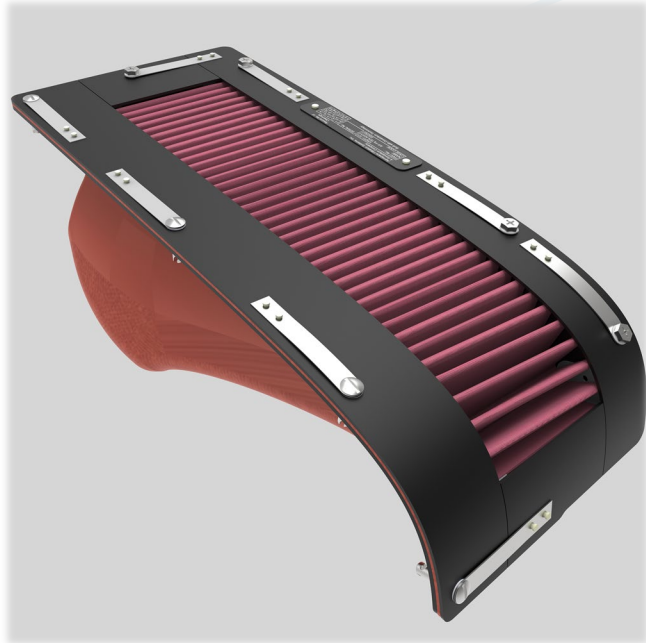
Donaldson Bell Inducer Vent Filter

December 1, 2020

BELL 407 IVF (Endorsed by Rolls-Royce & Bell)



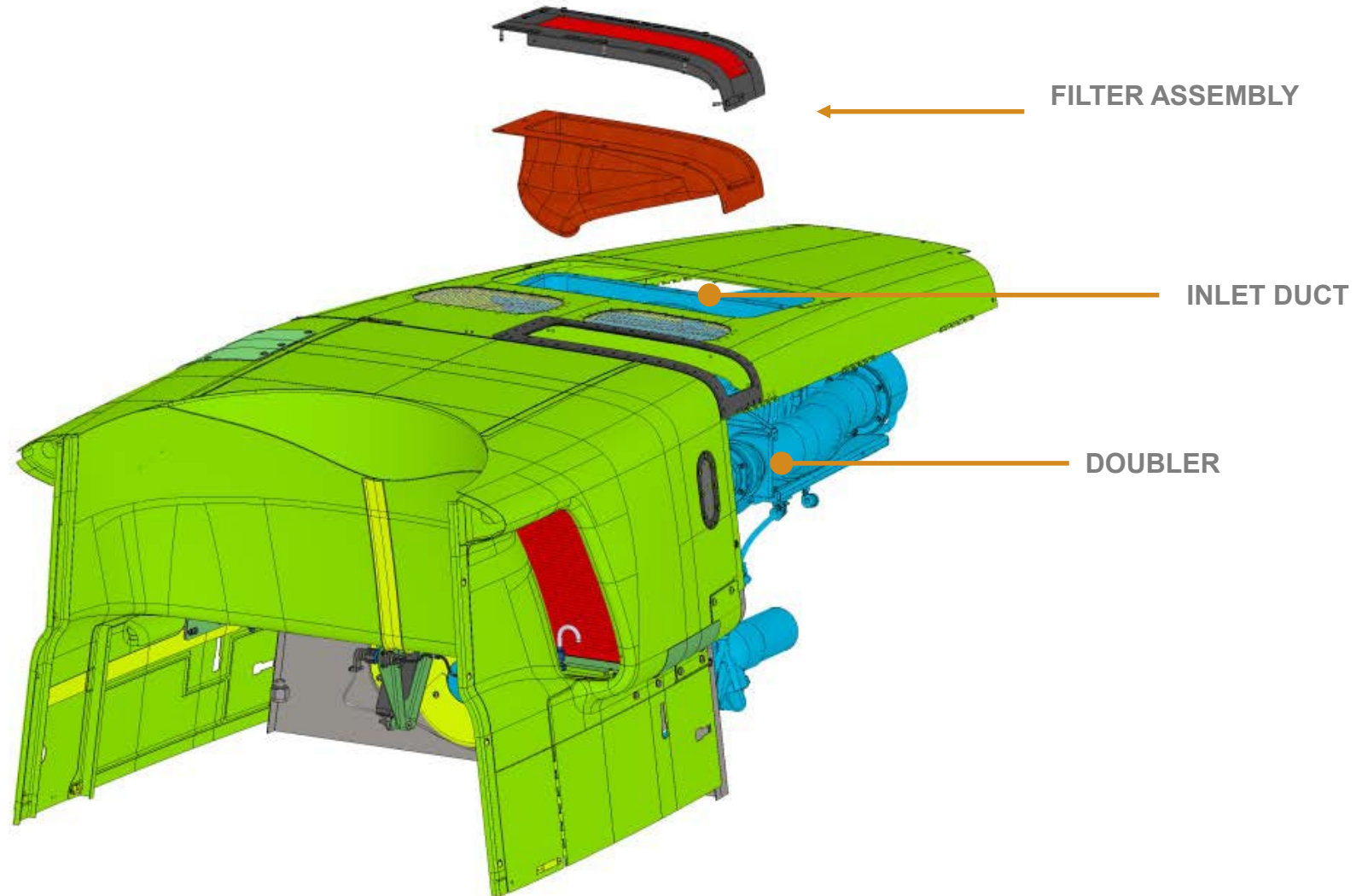
BELL 407 IVF SYSTEM DESIGN



PN 106250-101

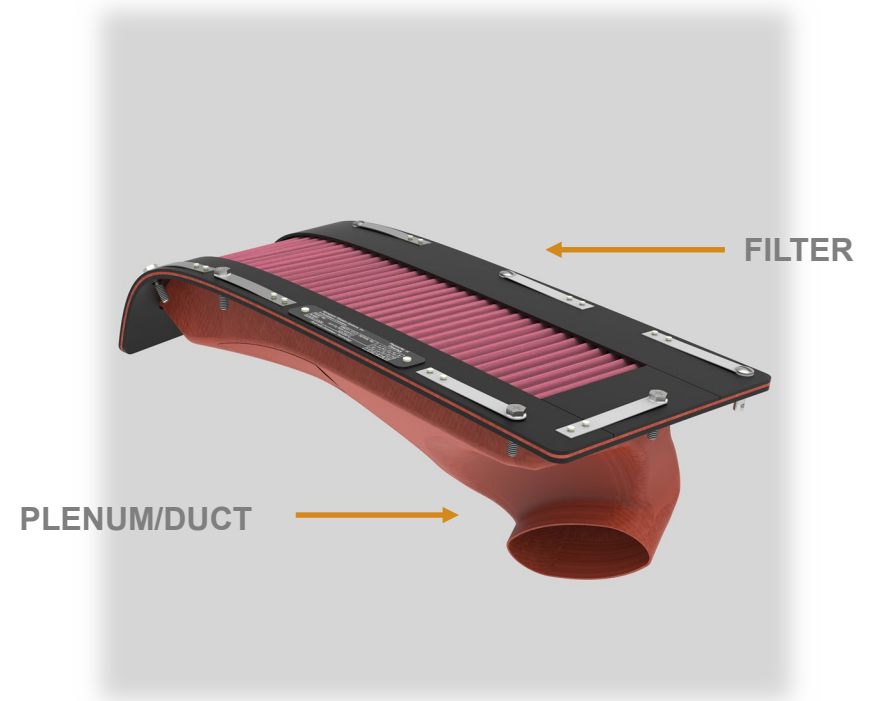


IVF COWLING PLACEMENT



BELL 407 IVF OPTIONS

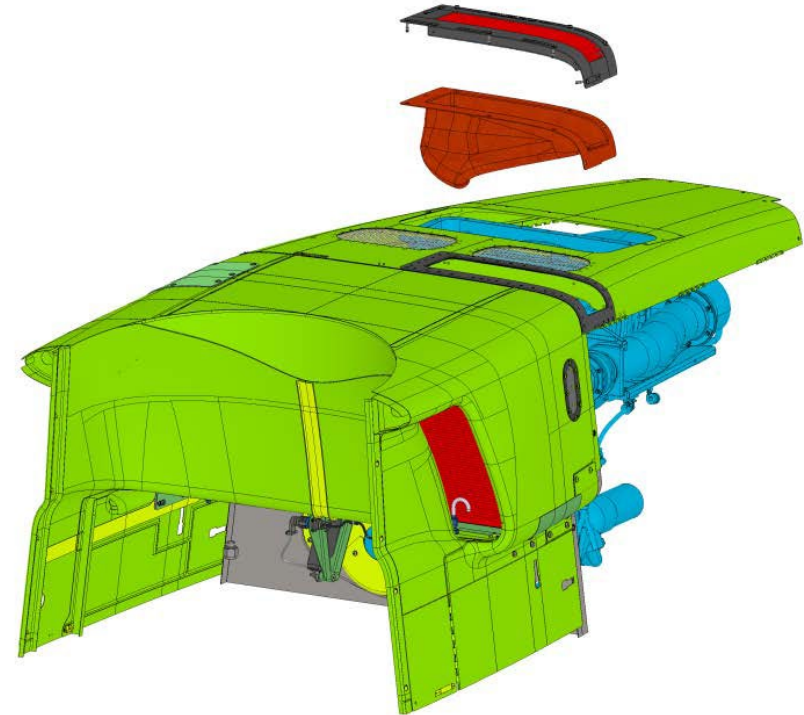
- Interchangeable Conformal Filter
- Interchangeable Plenum/Duct
- Fits Bell 407/407GX/407GX_i Aircraft configurations
- Fits any combination of Airframe Inlet



BELL 407 AIRCRAFT MODIFICATION

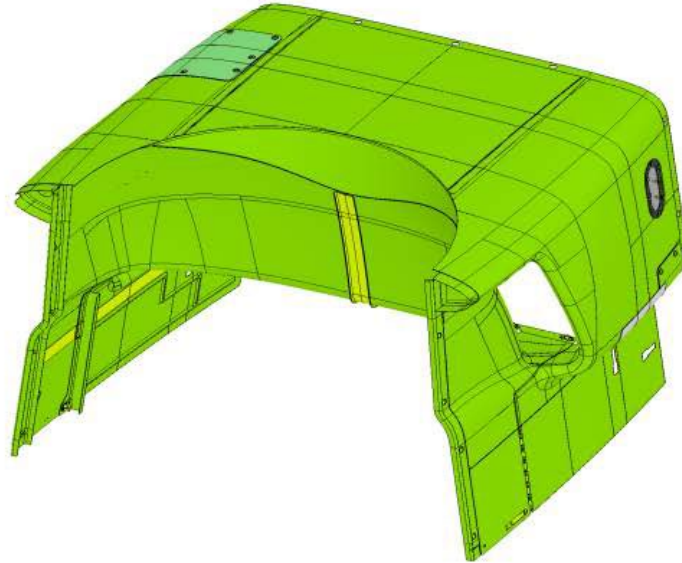
Air Inlet Cowl, Firewall, and Engine Cowl –

1. Cut cowling opening
2. Install Doubler
3. Install fastener receptacle on fire wall
4. Install cowling on aircraft
5. Install band clamp over plenum and inducer vent port (re-use inducer vent tube clamp)

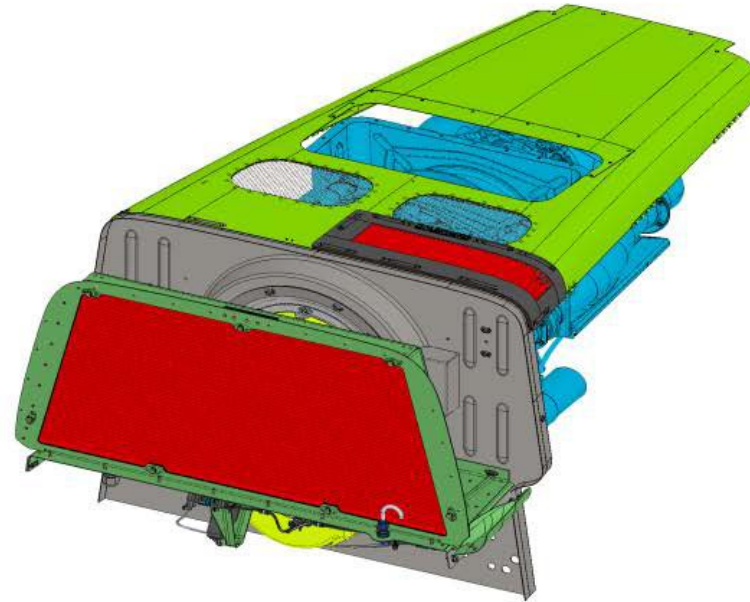


BELL 407 COWL TYPES

BELL ALUMINUM OR COMPOSITE
AIRFRAME INLET



BELL ALUMINUM OR COMPOSITE
ENGINE COWL



IVF BENEFITS

COMPLETE ENGINE PROTECTION

- IVF when installed in conjunction with IBF provides complete engine inlet protection.
- Comparable to combat-proven OH-58D Kiowa Inducer Vent protection in excess of 1 million flight hours.
- Inducer Vent draws in contaminated air above 96[^] N1 (typically high altitude and temperature operations)
- The Donaldson IVF provides 99% separation efficiency.

IMPROVED EROSION ISSUES

- This level of protection greatly improves erosion of the compressor blades at the inducer slot.



Thank You

Donaldson Company, Inc.
Aerospace & Defense Group

www.DonaldsonAerospace-Defense.com

North America +1-877-314-9640
aerospace.americas@donaldson.com
Europe +33 1 30866698
aerospace.emea@donaldson.com



Donaldson.
FILTRATION SOLUTIONS
AEROSPACE & DEFENSE